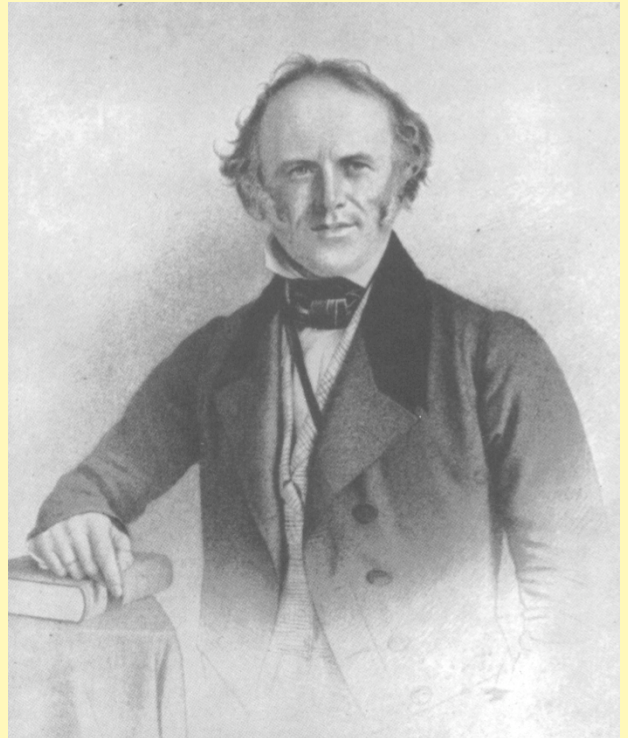


Graduate Seminar EBIO 6300-002

Pre-Darwinian Evolution

Charles Lyell: Pre-Darwinian Evolutionist?

It has long been assumed that Charles Lyell was reluctantly pulled towards an acceptance of evolution by Charles Darwin. His anti-Lamarckian rhetoric from the *Principles of Geology* (1832), coupled with his later “qualified” (he did not accept natural selection) advocacy of evolutionism, have much to do with this view. However, private notebooks composed between 1855 and 1861 reveal that Lyell grappled with the complexities of a progressive fossil record and the implications of evolutionist concepts, particularly as they relate to the origin of humans. Find out whether Charles Lyell qualifies as a pre-Darwinian evolutionist and how Alfred Russel Wallace played a role in sparking Lyell’s intellectual transformation.



1840's (Philadelphia)

Readings will include:

Principles of Geology (Charles Lyell)

Sir Charles Lyell's Scientific Journals on the Species Question

Time's Arrow, Time's Cycle (Steven J. Gould)

This graduate seminar will meet monthly, in the evening, on the following dates: September 7 (Thursday), October 7 (Saturday), November 5 (Sunday), December 5 (Tuesday). Permission of the instructor is required, so if you are interested in participating in this group (limited to 10 students), contact [William \(Ned\) Friedman](mailto:ned@colorado.edu) (ned@colorado.edu, 492-3082, or in person). The first organizational meeting will be in August, 2006.

Nota bene: Reading loads will be significant (~ 250 - 300 pages per meeting)